

# HARROW GREEN

BY KEVLER

Be part of the  
change





# Introducing Harrow Green

Harrow Green is a first in sustainably built and affordable homes in Rolleston, Canterbury. We've crafted new and innovative methodologies for subdivision development that allow us to deliver premium homes at an affordable price.

## Introducing a new more efficient way to build homes

Traditionally, land development and home construction are sequential, often extending the wait before you can step into your new home. Not anymore. compressed these timeframes means the journey from breaking ground to handing over the keys is significantly shorter, getting you into your home sooner than you ever imagined possible.

## Added features at no additional cost

Our commitment to excellence and efficiency enables us to offer something truly special - enhanced features at no extra cost. Imagine your dream home, complete with high-end finishes and special touches, all included as standard.

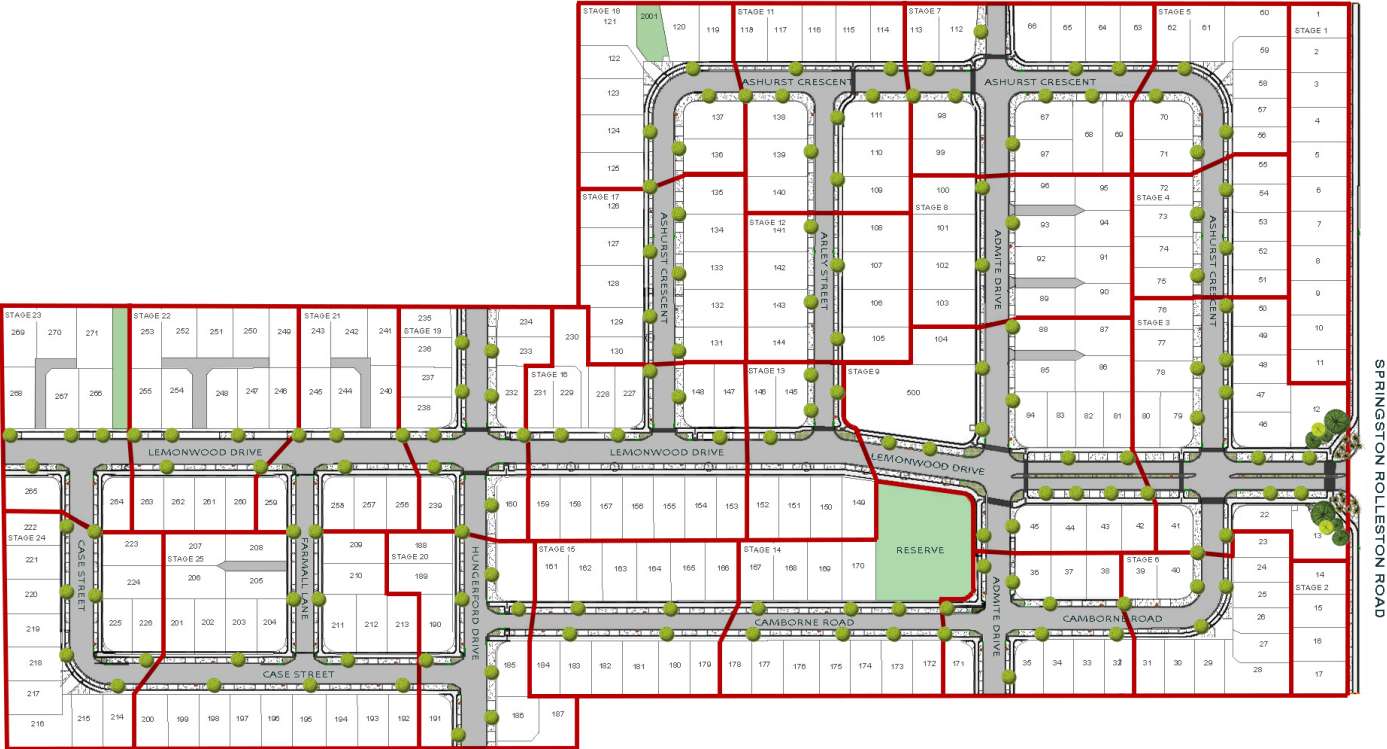
## Efficiency meets excellence

By embracing large-scale construction, we've refined our operations to prioritise unparalleled efficiency. Our logistical strategies, travel management, and project coordination are meticulously optimised to ensure both time and resources are utilised to their fullest. Collaborating closely with our suppliers, we embrace new ways that foster sustainability.

This commitment to eco-friendly practices allows us to extend considerable savings directly to you. Our streamlined approach not only expedites the building timeline but also elevates the sustainability and integrity of your home, demonstrating our dedication to excellence in every aspect.



# The master plan



266 residential lots | 25 stages | Nature reserve

# Feature-rich homes to make life a little easier



Solar Panels



Motorised Blinds



EV Charger Ready



App Controlled Garage Door



Security Cameras



2.55m High Ceiling



Irrigation System



Attic Storage



Video intercom



Luxe kitchen features



Moisture sensor fans



Quality ventilation



Ducted Heatpump



Tiled Shower

# Bringing our sustainability philosophy into your home



Imagine living in a community that breathes green - from your walls to your neighbourhood. At Kevler Homes, sustainability isn't just a buzzword, it's how we build a healthier, happier life for you and for generations to come. We've gone beyond industry standards to craft a space where energy efficiency, sustainable methodologies and thoughtful design meet modern living.

## Waste reduction

At Harrow Green, we are the land developer and the home builder. This instantly reduces a significant amount of construction waste.

## Reduced emissions

We efficiently run civil construction and residential construction simultaneously, significantly reducing the emissions typically caused by heavy machinery and multiple truck journeys.

## Eco-asphalt

Fulton Hogan's innovative material offers a significantly reduced carbon footprint, with manufacturing processes leading to emissions savings between 15-20% compared to traditional asphalt. Proudly made here in Christchurch.

## Eco-materials

Hand-picked sustainable building materials, sourced locally where possible to reduce transport-related emissions.

# Your new community at Harrow Green, fostering safe neighborhoods, sustainability and great living.

## Quality education

Harrow Green is zoned for Lemonwood Grove School, Rolleston College and with Rolleston Christian school nearby.



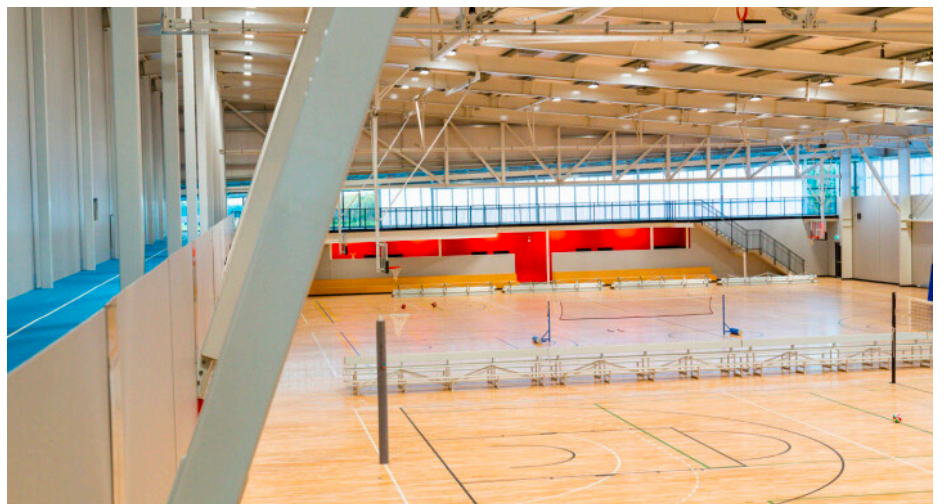
## Selwyn Aquatic Centre

Boasting 5 pools, including lane pools, leisure areas and a lazy river.



## Selwyn Sports Centre

Enjoy group fitness classes, sports leagues and social sports facilities.







Harrow Green is located in Rolleston District, just minutes from the bustle of Rolleston Village and 30 minutes drive to Christchurch’s CBD.

# The Kevler Care Extended Warranty



Get complete confidence and peace of mind with 'Kevler Care', our extended warranty that offers coverage for three years after completion, surpassing industry standards.

Our dedicated team will conduct two standard visits during this period, ensuring any warrantable items are promptly addressed. It's that simple. We take pride in our craftsmanship and want you to feel confident that your new Kevler home is built to last.

Homes for today's families.  
Built for a better tomorrow.





# Be part of the change at Harrow Green.

Contact us today, we would  
love to show you around.

Harrow Green is proudly brought  
to you by Kevler

**Phone** 03 261 9211

**Email** [info@kevlerhomes.co.nz](mailto:info@kevlerhomes.co.nz)

**Address** 10 Logistics Drive, Harewood,  
Christchurch 8051

**HARROW GREEN**  
BY KEVLER